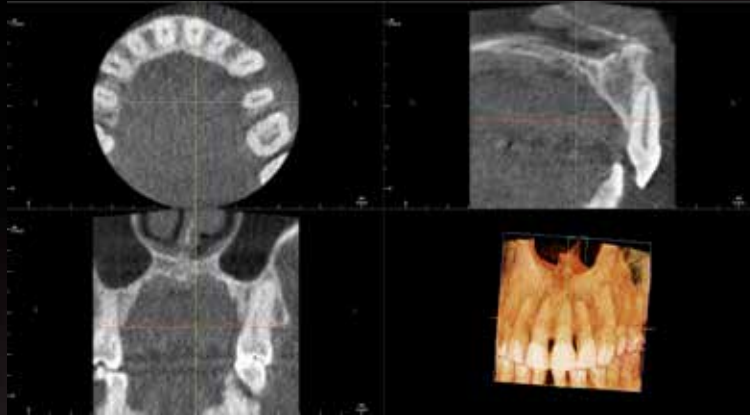




INSTRUMENTARIUM

There's No Need To Compromise

Capture clinically-rich 3D scans at a dose as low as a periapical X-ray.[†]



See more dose comparisons inside.

NEW

ORTHOPANTOMOGRAPH® OP300 Maxio

The newest member of the legendary product family from the pioneers in panoramic technology.



LOW DOSE TECHNOLOGY™

OP300 Maxio provides quality-optimized 3D scans at a radiation dose up to 5 times lower than a typical 2D panoramic image.*



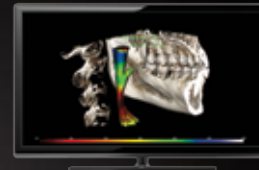
FLEXIBLE FIELD-OF-VIEWS

OP300 Maxio offers the ability to choose the Region of Interest with complete freedom in positioning within each of our 5 scan sizes ranging from 5x5cm to encompassing the entire maxillofacial area at 13x15cm.



ACCURATE TREATMENT PLANNING TOOLS

The new 3D software delivers a state-of-the-art end-user experience making procedures like restorative driven implant planning, airway assessments, and integration with digital impressions seamless and precise.



The Effective Dose from a 5x5cm 3D maxillary scan with Low Dose Technology™ is:



1/2

The flight from LA to London ‡



**5X
LESS**

Than a Digital Panoramic X-ray ¥



**2000X
LESS**

Than the Average Medical CT ‡



Want to learn more about
Low Dose Technology (LDT)?

Check out the NEW

ORTHOPANTOMOGRAPH®
OP300 Maxio

Set an appointment today with your local
Instrumentarium representative to see how
OP300 Maxio can benefit you, your practice
and your patients.

Call 800-558-6120

† European Commission. Radiation Protection 136. European Guidelines on Radiation Protection in Dental Radiology, 2004.

‡ Optimization of radiation protection for pediatric and adult patients in radiography and computed tomography. Proceedings of Third European IRPA Congress, June 2010.

¥ OP300 Maxio Dosimetry report, Prof. John B. Ludlow, April 2014. Based on a 5x5cm 3D scan with LDT.



www.instrumentariumdental.com | 1245 W. Canal Street, Milwaukee, WI 53233